

*HOMES THAT
WILL USHER IN
SPACE AND PEACE.*



AMAR
PEARL

Pure elegance

2&3 BHK Premium Apartments @ YAPRAL

AMAR PEARL

Pure elegance



*HOMES THAT
CREATE MOMENTS
TO CHERISH.*

AMAR PEARL is a commune with a limited number flats, but designed to be an address you'll love to flaunt for the rest of your life. More than that, it will be a nest to cherish and make life's most wonderful moments.

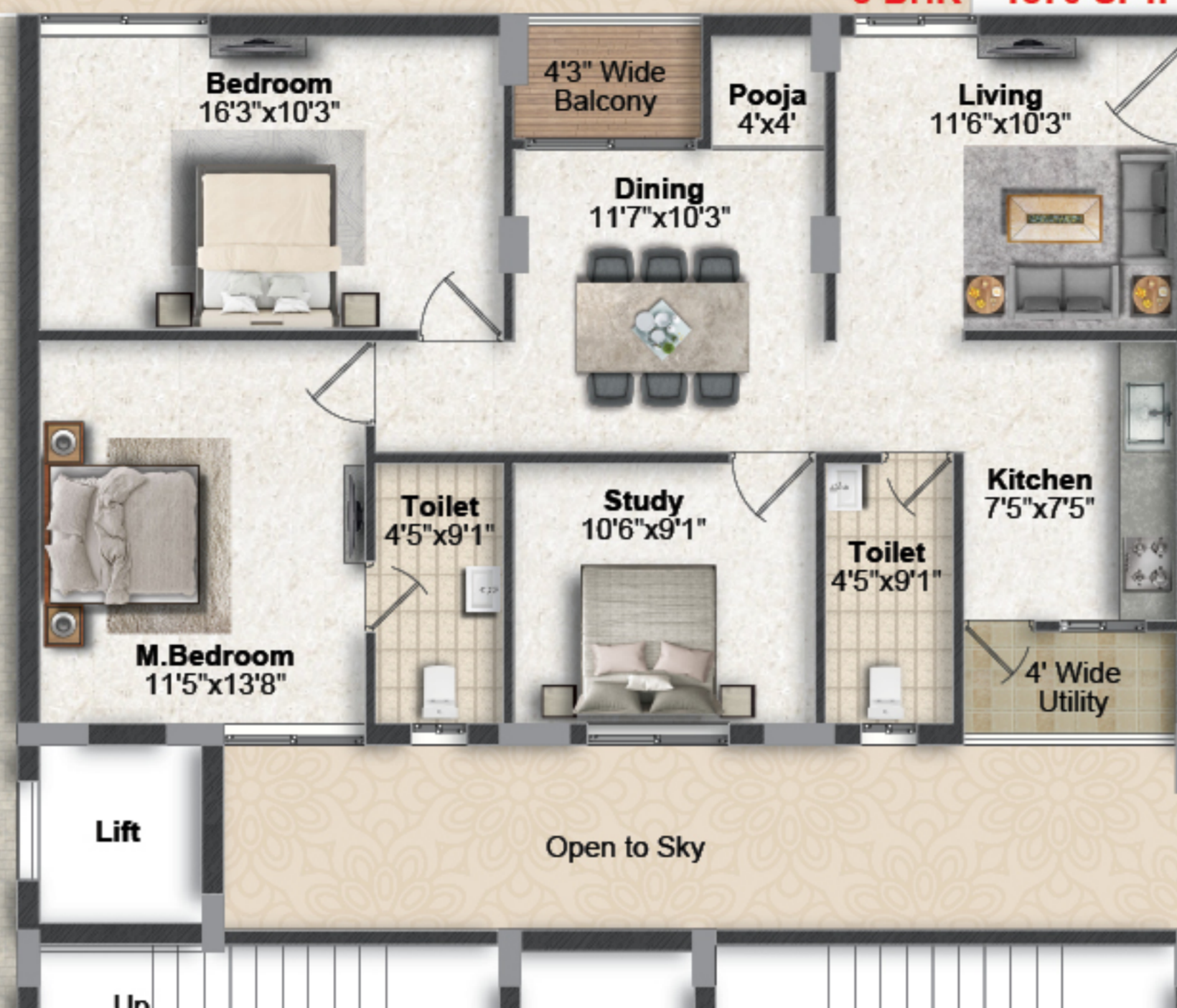


ROAD

2 BHK 1230 SFT.

3 BHK 1370 SFT.

2 BHK 1250 SFT.



6'5" Wide Corridor

6'5" Wide Corridor

Open to Sky

Open to Sky

Open to Sky

MAIN ROAD

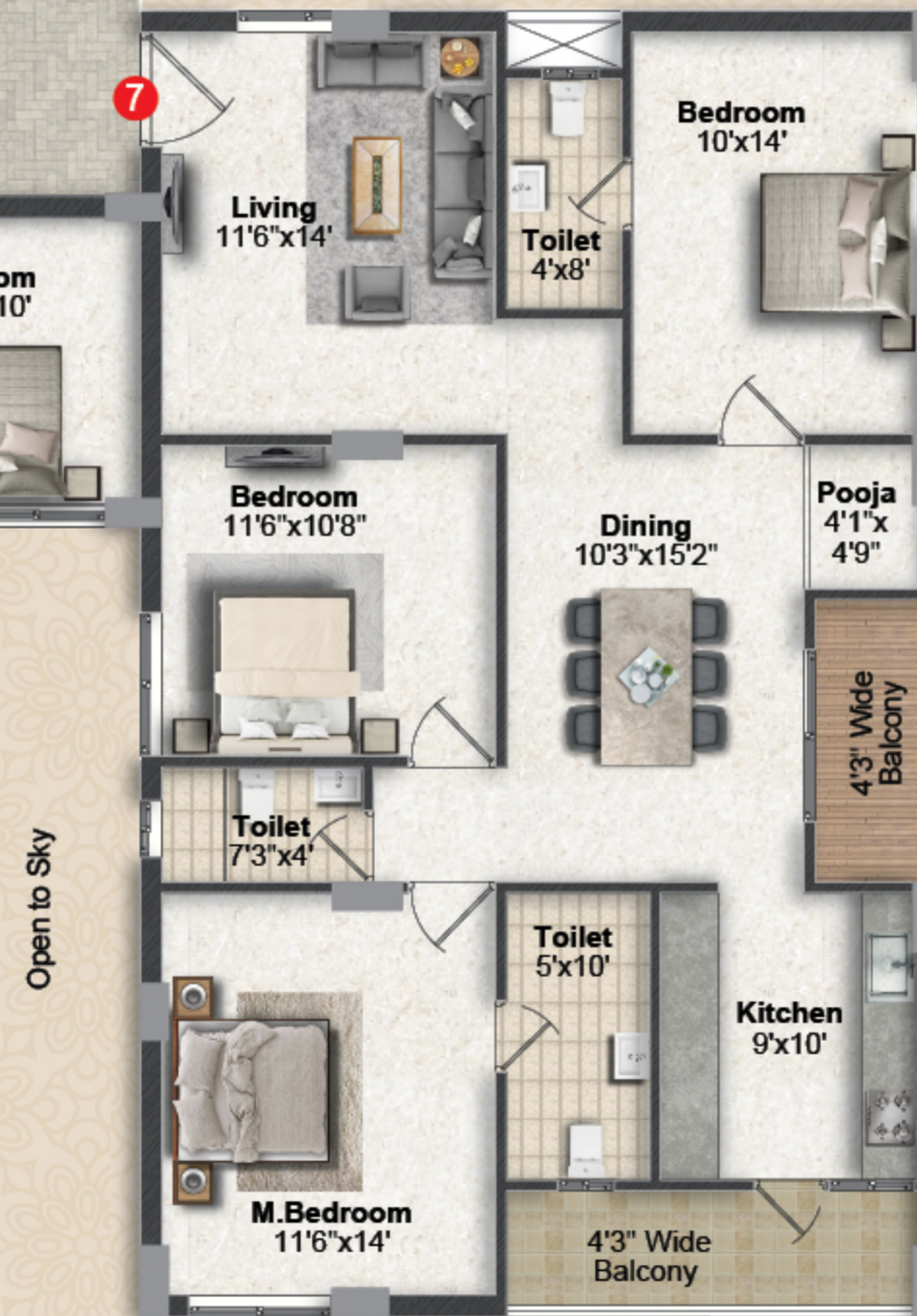
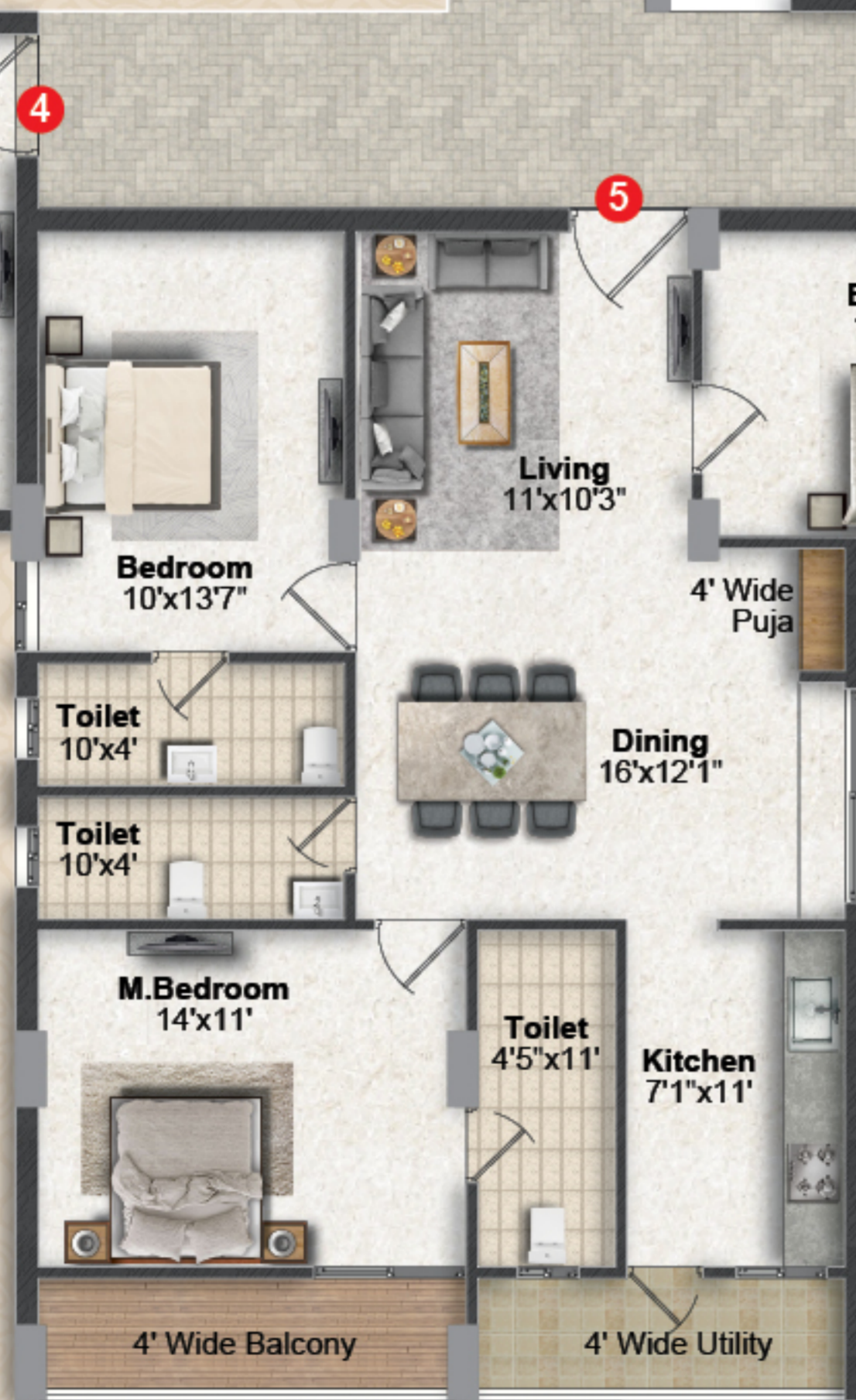
AMAR PEARL

Pure elegance

TYPICAL FLOOR PLAN

Area Statement

Flat No.	1	2	3	4	5	6	7
Type	2 BHK	3 BHK	2 BHK	3 BHK	3 BHK	3 BHK	3 BHK
Facing	West	East	East	East	North	North	West
Areas in Sft.	1250	1370	1230	1770	1490	1490	1615



6'5" Wide Corridor

Open to Sky

Open to Sky

Open to Sky

3 BHK 1770 SFT.

3 BHK 1490 SFT.

3 BHK 1490 SFT.

3 BHK 1615 SFT.

ROAD



**HOMEZ
PLANNED TO
BE SPACIOUS
AND SMART.**

AMAR PEARL is a wonderful commune of homes with generously spaced apartments with maximum space each other. With 3 BHK home of 1770 sft and 2 BHK homes of 1250 sft, here's all the place and space to get started with a smart life. Yes, we also present to you the option of turning it into a smart home. Come explore what we have for you.

AMAR
PEARL
Pure elegance

2 BHK

FLAT NO. 1
1250 Sft

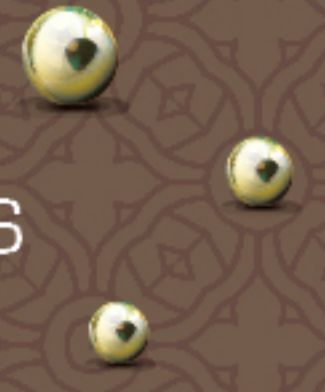


3 BHK

FLAT NO. 4
1770 Sft



3 D VIEWS



3 BHK

FLAT NO. 2
1370 Sft



2 BHK

FLAT NO. 3
1230 Sft



3 BHK

FLAT NO. 5 & 6
1490 Sft

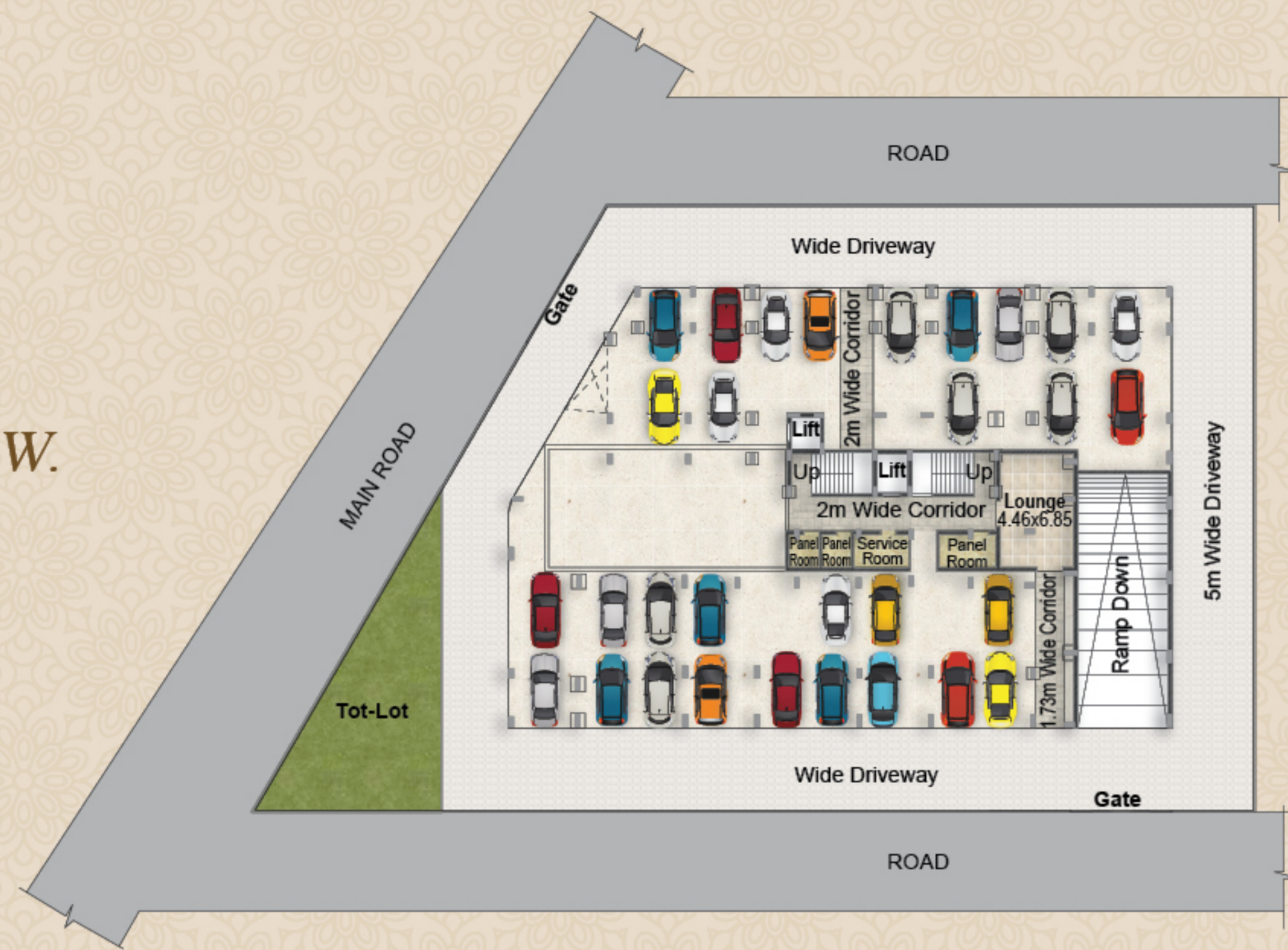


3 BHK

FLAT NO. 7
1615 Sft



*HOMEZ
DESIGNED
FOR THE
TIMES OF NOW.*



STILT
FLOOR PLAN

SPECIFICATIONS

<p>FOUNDATION & STRUCTURE R.C.C framed structure.</p>	<p>PAINTING Internal: Emulsion paint with roller finishing over putty finish. External: ACE paint.</p>	<p>LIFT 2 No. of 6 passingers Lift of standard-make with granite cladding.</p>
--	---	---

<p>SUPERSTRUCTURE Red clay brick work in cement mortar.</p>	<p>KITCHEN Granite platform with stainless steel sink / granite sink. Two taps for borewell water and drinking water.</p>	<p>PLASTERING Internal: Double-coat cement plastering finish with putty. External: Double-coat cement plastering putty or texture for elevation side.</p>
--	--	--

WINDOWS
All windows are UPVC or aluminum with safety iron grills and sliding glass doors.



TOILETS
All toilets with non-slip ceramic tile flooring and 6' wall cladding with ceramic tiles WB and EWC in attached toilet Hot and cold wall mixture with shower.

ELECTRICAL
Concealed copper wiring 15 Amps power points, 1 kitchen, 1 dining, 1 MBR, 1 CBR, 1 geyser point in all toilets. Telephone and cable points in drawing and master bedroom with modular switches.

AMENITIES
Generator for common lighting, lift, all tubelights and fan points in every flat. Transformer with three-phase meter, municipal water, sewerage and car parking costs to be borne by customers only.

JOINERY WORKS
Main Door: Teakwood frame with Flush door and laminate.
Internal Doors: Teak shutter frame with flush door and laminate.

FLOORING
Vitrified tiles of 24" X 24" size for hall, dining, bedrooms, kitchen and balcony.

NOTE
1) Registration Charges, GST and any other taxes applicable as per government norms to be borne by customers only.
2) People desiring to alter / modify their flat can do so by prior request and additional payment.
3) Cement racks, arch, etc optional with extra cost.

AMENITIES
& FEATURES

- All 2 & 3 BHK Apartments
- No common walls
- Excellent ventilation
- Quality construction
- Rain water harvesting pit
- 100% vastu
- Power back-up generator
- Prime location
- Tot-Lot

AMAR PEARL is designed with all that you need to have in a home for the modern times. From a two-level parking to amenities and features that make life easy and efficient – it's all here. Whether it's the location of the place or the security aspect of the place, here's the one.



CELLAR
FLOOR PLAN



*HOMEZ
LOCATED WHERE
LIFE IS EASY.*

AMAR PEARL is located in Yapral. It's such a central location and makes life easier than you would imagine. Take a glimpse at all the advantages of a home here.

LOCATION PLAN
(Not to scale)





REGISTRATION NO.



For More Information

HOMES THAT ARE CRAFTED WITH PASSION.

Welcome to a home that's not just built, not just created, but crafted with passion for delivering a living that you'll appreciate. Designed with thought, planned to every detail, and crafted with immense passion – AMAR REAL presents AMAR PEARL in Yapral.



AMAR
REAL

6-3-1239/2, 'AMAR' 2nd Floor,
Raj Bhavan Road, Somajiguda, Hyderabad -500 0082
Cell: **9040 74 3030, 9040 78 3030**

Note: This brochure is only a conceptual presentation of the project and not a legal offering.
The promoters reserve the right to make changes in plans, specifications and elevation as deemed fit.

Artifice - 9885253570